

TIMKEN® CORROSION-RESISTANT BALL BEARING HOUSED UNITS

MAXIMIZE YOUR EQUIPMENT OUTPUT WITH TIMKEN® CORROSION-RESISTANT BALL BEARING HOUSED UNITS FEATURING STAINLESS STEEL INSERTS.

Designed with non-corrosive materials and food-grade lubricant, the product can withstand aggressive washdown management and a variety of wet and dry contaminants. The result? Enhanced reliability that helps extend bearing life, improve production uptime and – most importantly – elevate food safety.

GAIN SOLUTIONS THAT:

Improve Food Safety

Our products meet the most stringent food safety legislation and regulations. You gain reliable operations with peak performance in critical machines.

Reduce Maintenance

Premium products tout longer operating lives even in demanding environments.

Decrease Unplanned Downtime

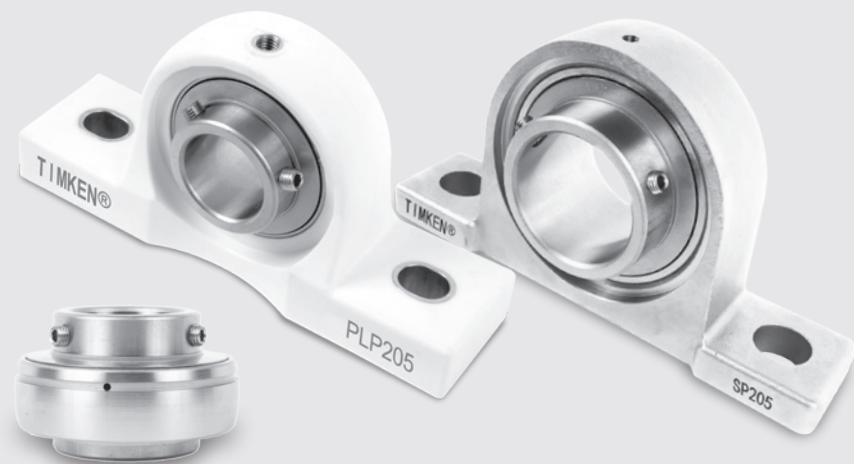
Long-lasting products and predictive maintenance help you avoid sudden, expensive shutdowns. Head off costly changeouts with products designed to handle corrosion, thermal expansion and harsh chemicals. And eliminate downtime from mandatory cleanings or constant re-greasing.

Increase Overall Productivity

Our products are designed for efficiency. You can maintain optimum uptime despite chemical washdowns, high temperatures and fast throughput.

SANITARY BEARINGS FOR ALL STAGES

Our corrosion-resistant ball bearing housed units can help reduce ownership costs thanks to longer life and fewer maintenance events.



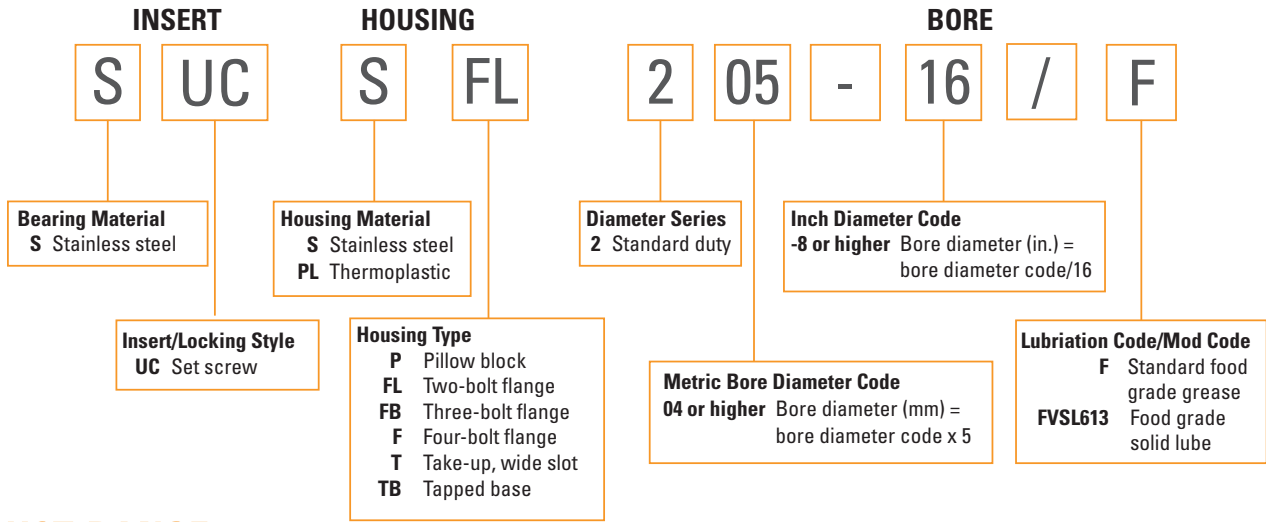
PRODUCT ADVANTAGES

- » Stainless steel ball bearing inserts with set screw
- » Housings available in polymer (thermoplastic) or stainless steel and all mounting styles
- » Interchangeable industry-standard mounted bearings from ¾ in. to 2 in. or 20 mm to 50 mm
- » Hygienic construction (smooth surface, laser marking, co-molded bushings) and metal cage for higher food safety
- » Double lip seal for higher ingress protection
- » Designed for normal operations between -20° C and 100° C (-4° F and 212° F)
- » Solid Lube options

A SMART FIT FOR A MULTITUDE OF APPLICATIONS:

- » Conveyors
- » Mixers
- » Metal detectors
- » Check-weighers
- » Tumblers
- » Slicers
- » Breaders
- » Peelers

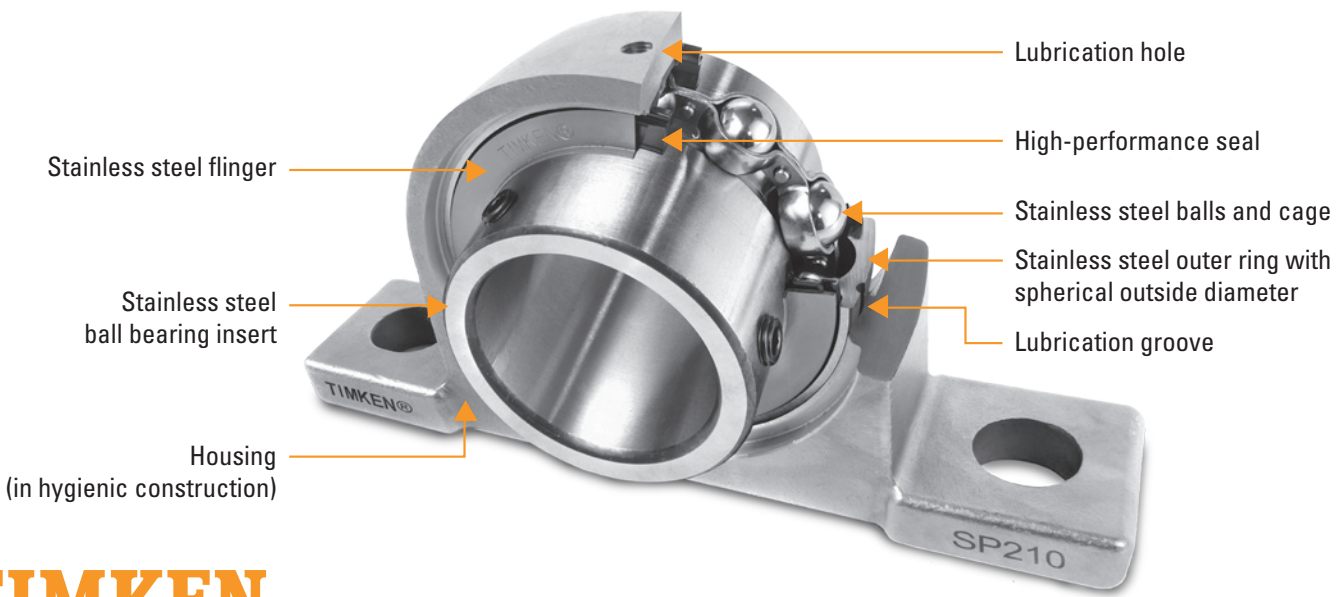
NOMENCLATURE



PRODUCT RANGE

Type	Housing Type	Stainless Housing								Polymer (Thermoplastic) Housing							
		Insert Series								Insert Series							
		204	205	206	207	208	209	210	204	205	206	207	208	209	210		
Standard Housings (S, PL)	Pillow block (P)	●	●	●	●	●	●	●	●	●	●	●	●	●	●		
	Two-bolt flange (FL)	●	●	●	●	●	●	●	●	●	●	●	●	●	●		
	Three-bolt flange (FB)	●	●	●	●	●			●	●	●	●					
	Four-bolt flange (F)	●	●	●	●	●	●	●	●	●	●	●	●	●	●		
	Take-up, wide slot (T)	●	●	●	●	●	●	●									
	Tapped base (TB)	●	●	●	●	●	●	●									
	Tapped base, Y series design with imperial thread (TBY)	●	●	●	●	●			●	●	●	●	●	●	●		

- Current offering shown in catalog product tables.
- For product data, price and availability contact your local sales representative.



TIMKEN

The Timken team applies their know-how to improve the reliability and performance of machinery in diverse markets worldwide. The company designs, makes and markets bearings, gear drives, automated lubrication systems, belts, brakes, clutches, chain, couplings, linear motion products and related power transmission rebuild and repair services.

Stronger. By Design.

www.timken.com